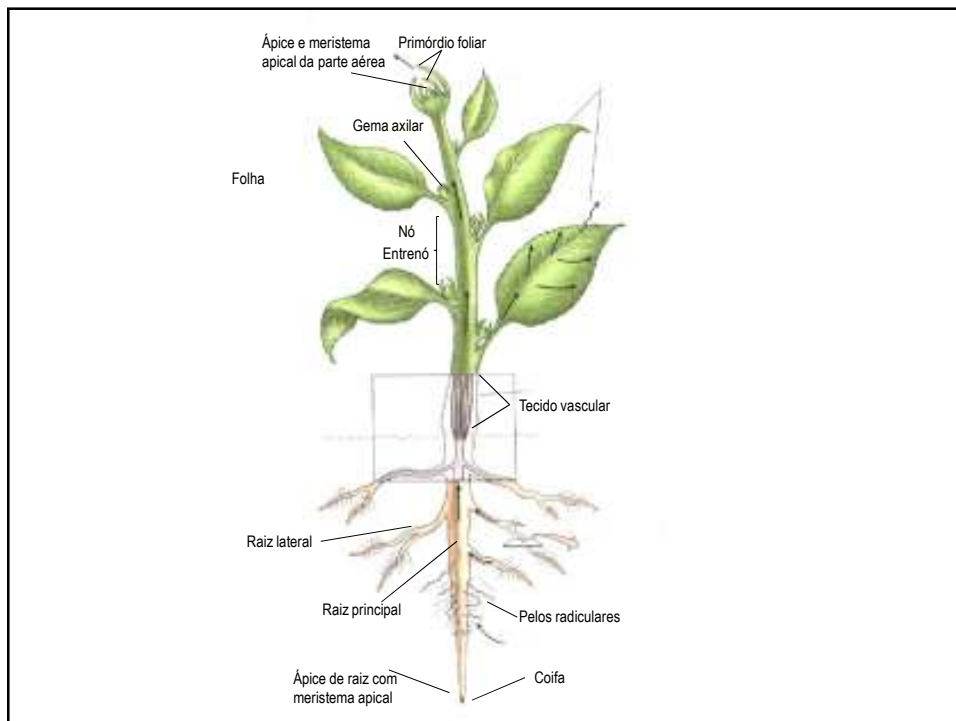
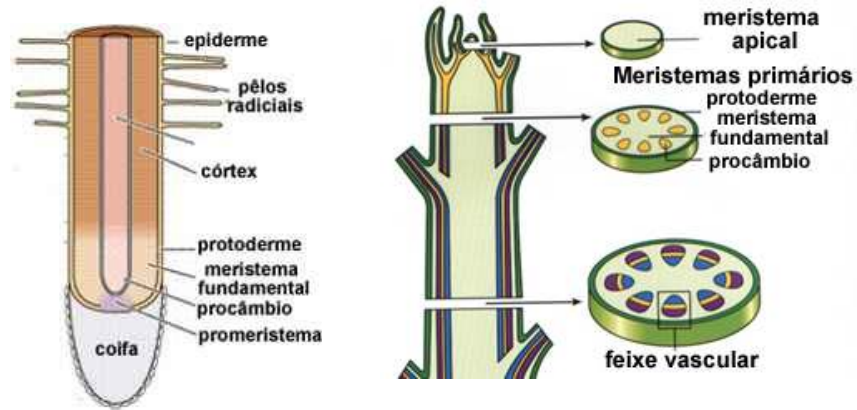


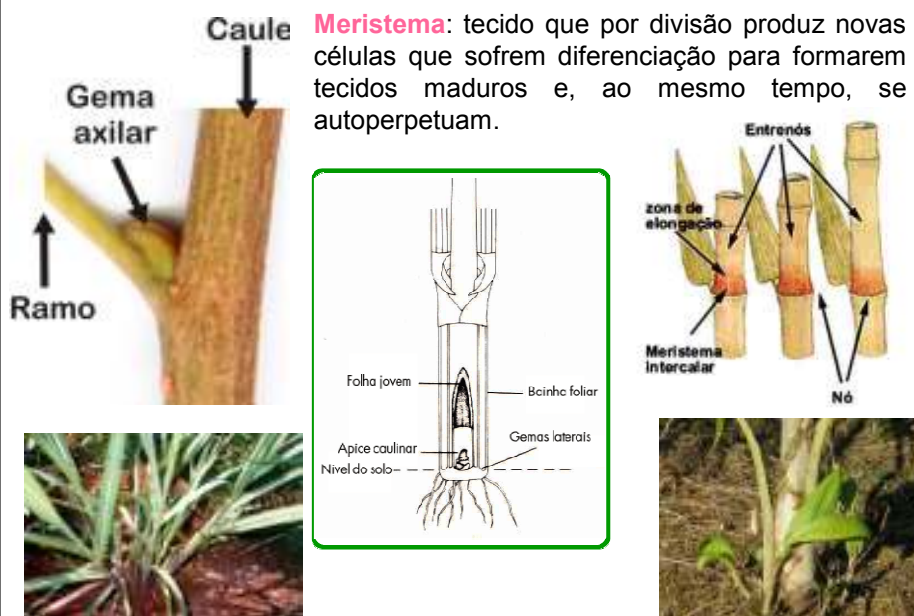
Tecidos vegetais



Meristemas

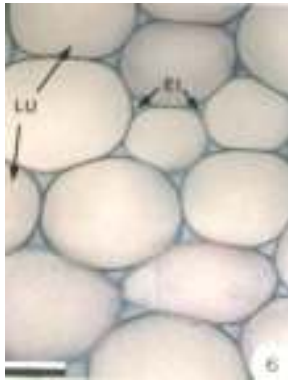


Meristemas secundários



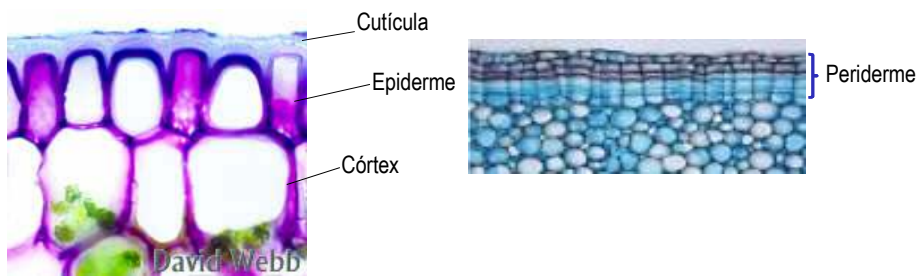
Tecidos de preenchimento

Parênquima



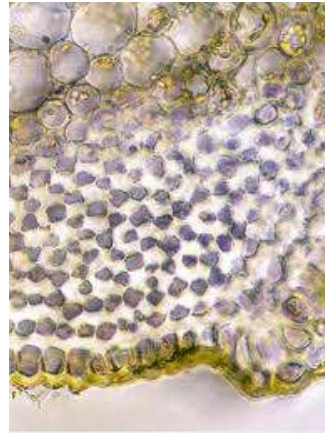
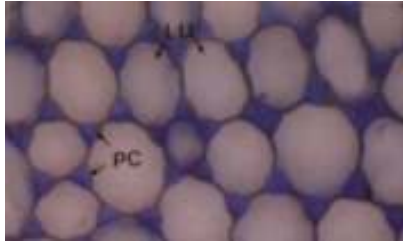
Tecidos de revestimento

Epiderme e periderme



Tecidos de sustentação

Colênquima



Tecidos de sustentação e condução

Xilema e floema

Esclerênquima

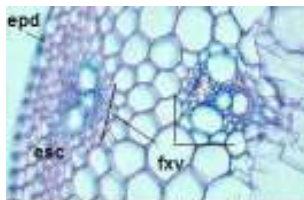
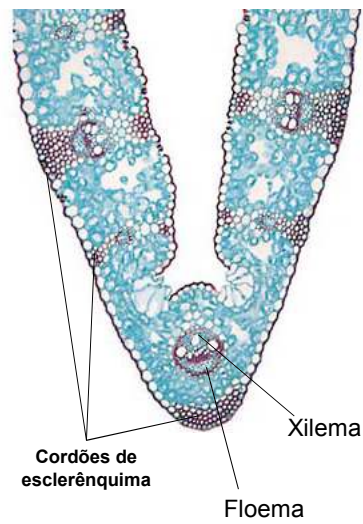


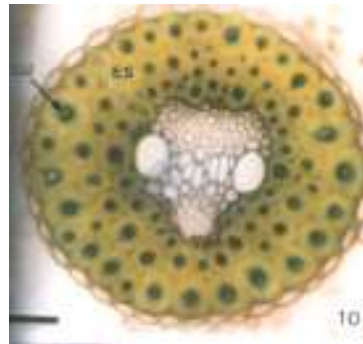
Fig. 13 - Corte transversal do caule de trigo.



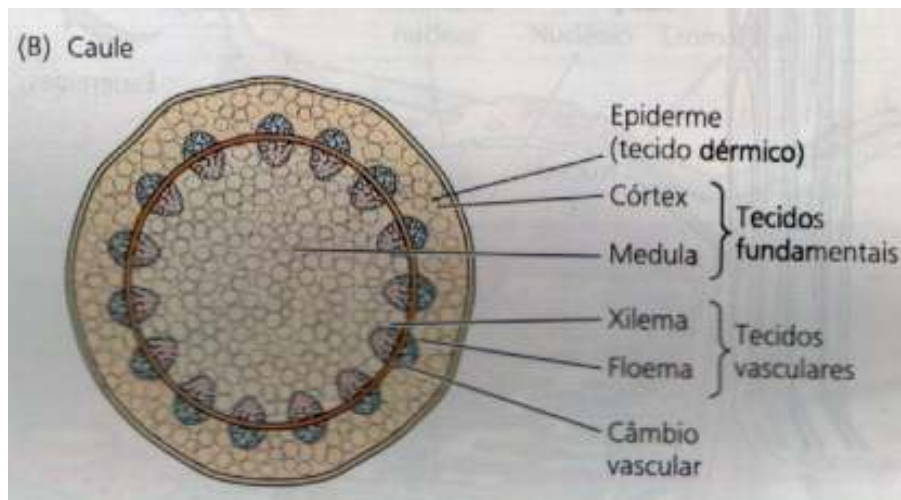
Tecidos de sustentação e condução

Xilema e floema

Esclerênquima



(B) Caule



Caule

Esclerênquima

